

FOR ADULT PATIENTS

\*Actor portrayal.



# LEARN ABOUT

## Pr CRYSVITA<sup>®</sup>

(burosomab injection)

Your XLH treatment guide

This guide is solely intended for Canadian patients who have been prescribed CRYSVITA.

# Understanding your X-linked hypophosphatemia (XLH) treatment with CRYSVITA

Learn how CRYSVITA works, what to expect at your treatment appointment, and more.



\*Actor portrayal.

## Table of contents

What is XLH?	4
What are the symptoms of XLH in adults?	4
Who gets XLH?	5
What is CRYSVITA?	6
How does CRYSVITA work?	6
How do I take CRYSVITA?	7
Before starting CRYSVITA	8
Important safety information	9
Getting started with CRYSVITA	10
Kyowa Kirin Cares™ Patient Support Program	11

# What is XLH?

X-linked hypophosphatemia (XLH) is a genetic disease. People with XLH have higher levels of a hormone called **fibroblast growth factor 23** (FGF23). FGF23 lowers the amount of phosphate in the blood. The low level of phosphate may lead to bones that cannot grow and harden properly.

The content below provides information on XLH and may not reflect benefits of CRYSVITA.

## What are the symptoms of XLH in adults?

In adults, symptoms of XLH may include:

- Osteomalacia (bone weakening)
- Bowed legs or knock knees
- Joint stiffness
- Impaired mobility
- Short stature
- Dental abscesses

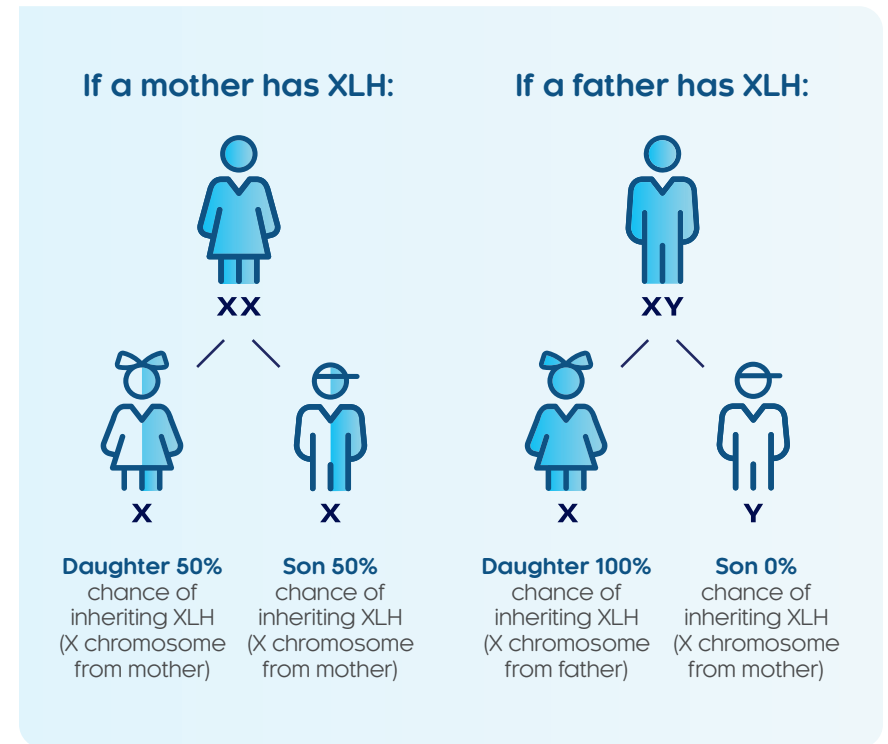


\*Actor portrayal.

## Who gets XLH?

In most cases, XLH is an inherited disease, which means parents pass XLH down to their children. If you have XLH, other people in your extended family may have it, too.

X-linked means that the gene affected is on the **X chromosome**. Females have two X chromosomes, while males have one X chromosome and one Y chromosome.



In about **20%** of cases, a person develops XLH without any family history.

**XLH is a rare disorder, affecting up to 1 in 20,000 people.**

# About CRYSVITA

## What is CRYSVITA?

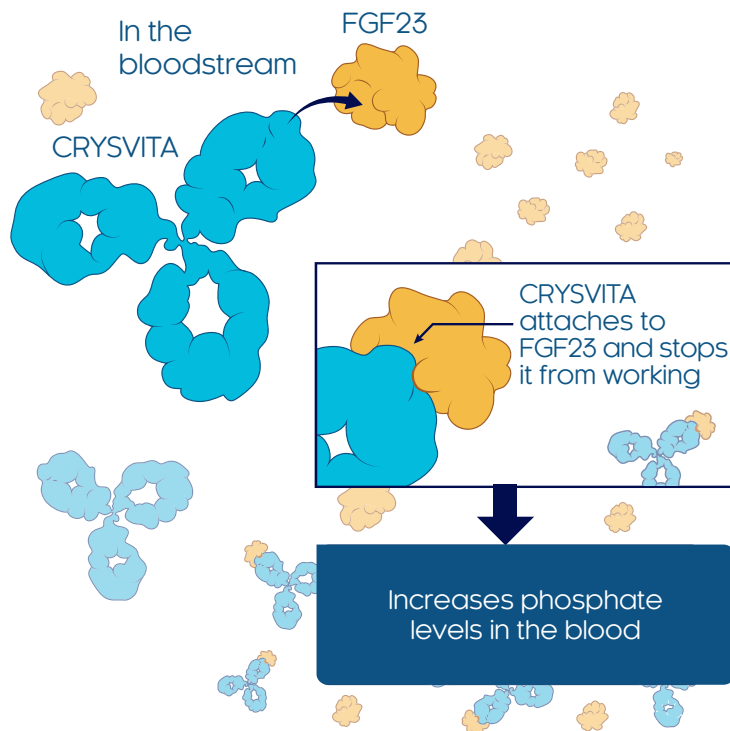
CRYSVITA contains the active substance **burosumab**. This is a type of medicine called a **human monoclonal antibody**.

Monoclonal antibodies are proteins that recognize and bind specifically to certain proteins in the body.

CRYSVITA is used to treat **X-linked hypophosphatemia (XLH)**. It is used in children 6 months of age and older and adults.

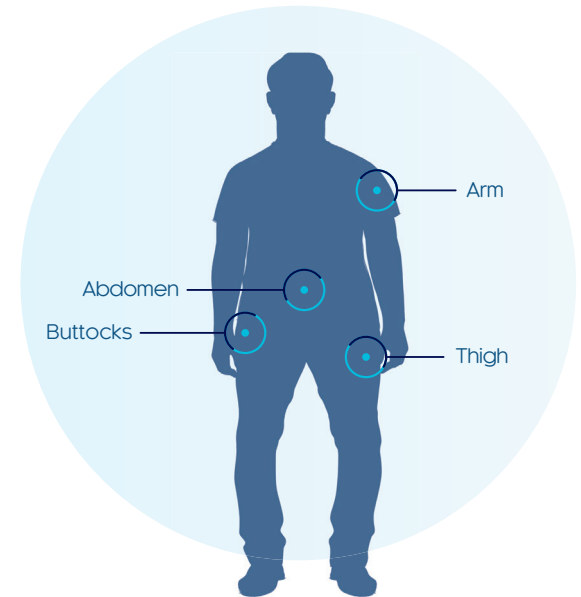
## How does CRYSVITA work?

CRYSVITA attaches to FGF23 in the blood, which stops FGF23 from working and increases phosphate levels in the blood so that normal levels of phosphate can be achieved.



# How do I take CRYSVITA?

A trained healthcare professional should give you CRYSVITA as an injection under the skin, in the arm, abdomen (stomach area), buttocks, or thigh.



The amount of CRYSVITA you take (called the dose) is based on your body weight. Your healthcare professional will determine the right dose for you.



In adults, CRYSVITA is given **every 4 weeks**.

## While taking CRYSVITA, tell your healthcare professional if you experience the following serious side effects:

- **Skin reactions** (only if severe). *These are very common.*
- **Dizziness** (only if severe). *This is very common.*
- **Allergic reactions** shortly after being given CRYSVITA (in all cases). Symptoms: rash and itching all over the body; severe swelling of eyelids, mouth, or lips; shortness of breath; rapid heartbeat; and sweating. *These are rare.*

If you experience any side effects not listed here, or have a troublesome symptom that becomes bad enough to interfere with your daily activities, talk to your healthcare professional.

# Before starting CRYSVITA

You should not take CRYSVITA if you:

- Are allergic to burosumab or any of the other ingredients in this medication
- Are taking any phosphate or active vitamin D
- Already have a high level of phosphate in your blood (called hyperphosphatemia)
- Have severe kidney disease or kidney failure

**To help avoid side effects and ensure proper use of CRYSVITA, talk to your healthcare professional before you take CRYSVITA. This includes any health conditions or problems you may have, including if you are:**

- Taking phosphates or active vitamin D, such as those with the active ingredient calcitriol or alfacalcidol. There are some non-active vitamin D supplements you can use and your healthcare professional will advise which ones these are.
- Having problems with your parathyroid glands.



**Tell your healthcare professional about all the medicines you take, including any drugs, vitamins, minerals, natural supplements, or alternative medicines.**

Studies to test how CRYSVITA interacts with other medicines have not been done.

# Important safety information about CRYSVITA

**Other warnings to know about:**



## Skin reactions

You may get skin reactions where you receive your injection. If they are severe, contact your healthcare professional right away.



## Pregnancy and breastfeeding

If you are pregnant or breastfeeding, think you might be pregnant or are planning to have a baby, ask your healthcare professional or pharmacist for advice before taking this medicine. This is because it is not known if CRYSVITA will affect the baby.



## Females of child-bearing potential

Females who are able to become pregnant should use an effective method of birth control during treatment with CRYSVITA and for at least 14 weeks after stopping treatment. Talk to your healthcare professional about birth control methods that you can use during this time. Tell your healthcare professional right away if you become pregnant during treatment with CRYSVITA.

It is not known if CRYSVITA passes into breast milk, and a risk to newborns or infants cannot be ruled out. If you have questions, ask your healthcare professional.

## Possible side effects

Like all medicines, CRYSVITA can cause side effects, although not everybody gets them. Side effects in adults may include:

- Back pain
- Headache
- Tooth infection
- Restless leg syndrome
- Constipation
- Low vitamin D
- Dizziness
- Muscle spasm



If you experience any side effects not listed here, or have a troublesome symptom that becomes bad enough to interfere with your daily activities, talk to your healthcare professional.

# Getting started with CRYSVITA

## What to expect at your treatment appointment:

Starting a new medication may take some time to get used to.

**Remember: your healthcare team is there to support you.** If you have any questions, don't hesitate to ask them.

During your CRYSVITA treatment, your healthcare professional may take blood and urine samples to measure your phosphate levels. This is done to reduce the risk of hyperphosphatemia (too much phosphate in the blood).

Your healthcare professional may also check the calcium and parathyroid hormone levels in your blood before and during treatment. This is done to reduce the risk of hypercalcemia (too much calcium in the blood) and hyperparathyroidism (too much parathyroid hormone in the blood).

These tests allow your healthcare professional to know if you are getting the right dose of CRYSVITA and adjust it, if needed.

## Questions your healthcare professional may ask you:

- Are you currently taking any medications?
- Is there a chance you could be pregnant?
- Are you planning to become pregnant?
- Are you currently breastfeeding, or do you plan to breastfeed?
- Do you have any kidney problems?
- Do you have any parathyroid problems?

Your answers to these questions will help inform your CRYSVITA treatment plan.



CRYSVITA will be given by injection under the skin in the arm, abdomen, buttock or thigh by your healthcare professional.



If you miss an appointment, talk to your healthcare professional right away. The missed dose should be given as soon as possible.



After your injection, you may be monitored for a short period of time.

## After your appointment



If you have questions or concerns, reach out to your healthcare professional. Be sure to keep your appointments for scheduled CRYSVITA injections. Writing them down in a calendar or scheduling them in your phone may help you remember.



\*Actor portrayal.



## Support throughout your CRYSVITA treatment journey

Kyowa Kirin is committed to patients with rare diseases, which is why we created the Kyowa Kirin Cares™ Patient Support Program—a suite of services designed to help you along your CRYSVITA treatment journey.

Our **Nurse Case Managers** are experienced professionals who are passionate about supporting you at every step. They can help you:

- Learn about CRYSVITA therapy
- Understand your insurance coverage
- Determine your eligibility for financial assistance
- Coordinate the delivery of your CRYSVITA and injection supplies
- Schedule your CRYSVITA injections

**Talk to your healthcare professional about enrolling you into the Kyowa Kirin Cares™ Patient Support Program.**

If you have any questions, call us at 1-833-KYOWA-CA (1-833-596-9222).

# Understanding your XLH treatment with **CRYSVITA**

## HELPFUL RESOURCES

Below you will find some communities and resources that are helping people with XLH.

### **The Canadian XLH Network**

<https://canadianxlhnetwork.org/>

### **Canadian Organization for Rare Disorders (CORD)**

<https://www.raredisorders.ca/>



**Kyowa KIRIN**

**Kyowa KIRIN**  
ACCESS • ASSISTANCE • UNDERSTANDING



© 2025 Kyowa Kirin Canada, Inc. All rights reserved.

CRYSVITA and Kyowa Kirin Cares are trademarks or registered trademarks of Kyowa Kirin Co., Ltd., used with permission. COMM-CA-CRY-0086 December 2025